

Lawson's Fork showing mill sites



Glendale Mill around 1920

14302 - *Glendale Park and Mills, SPARTANBURG, S.C.*



Glendale park and mill around 1920



D.E. Converse and Albert Twitchell houses



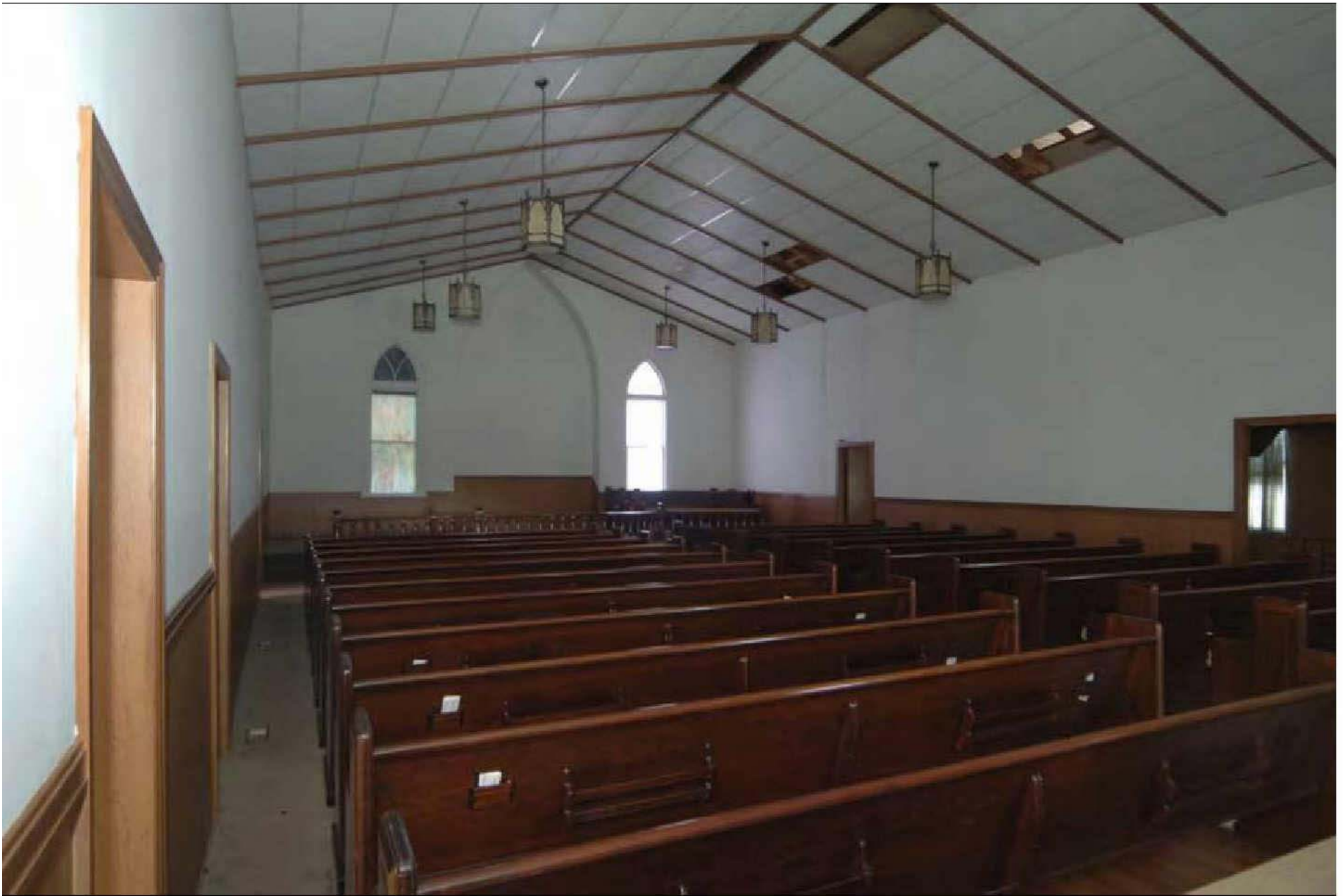
Glendale Mill fire, March 20, 2004



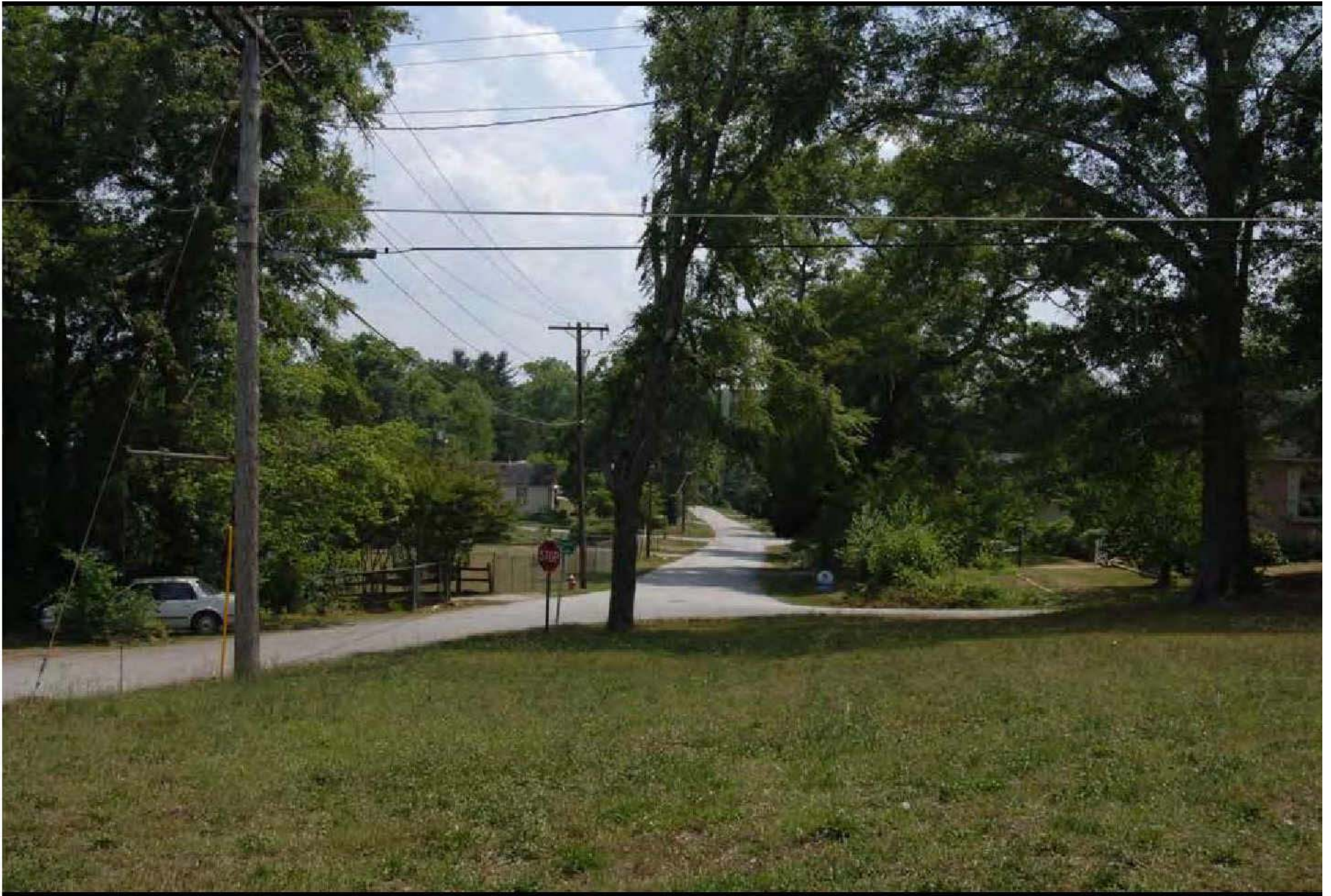
Glendale Mill ruins



The discontinued United Methodist Church



Church interior – to be used as Outdoor Leadership School



View of Douglas Street from front of church



The Glendale Mill office



Glendale office middle room



View of Lawson's Fork between office and large



Two towers, two smokestacks, wheel house



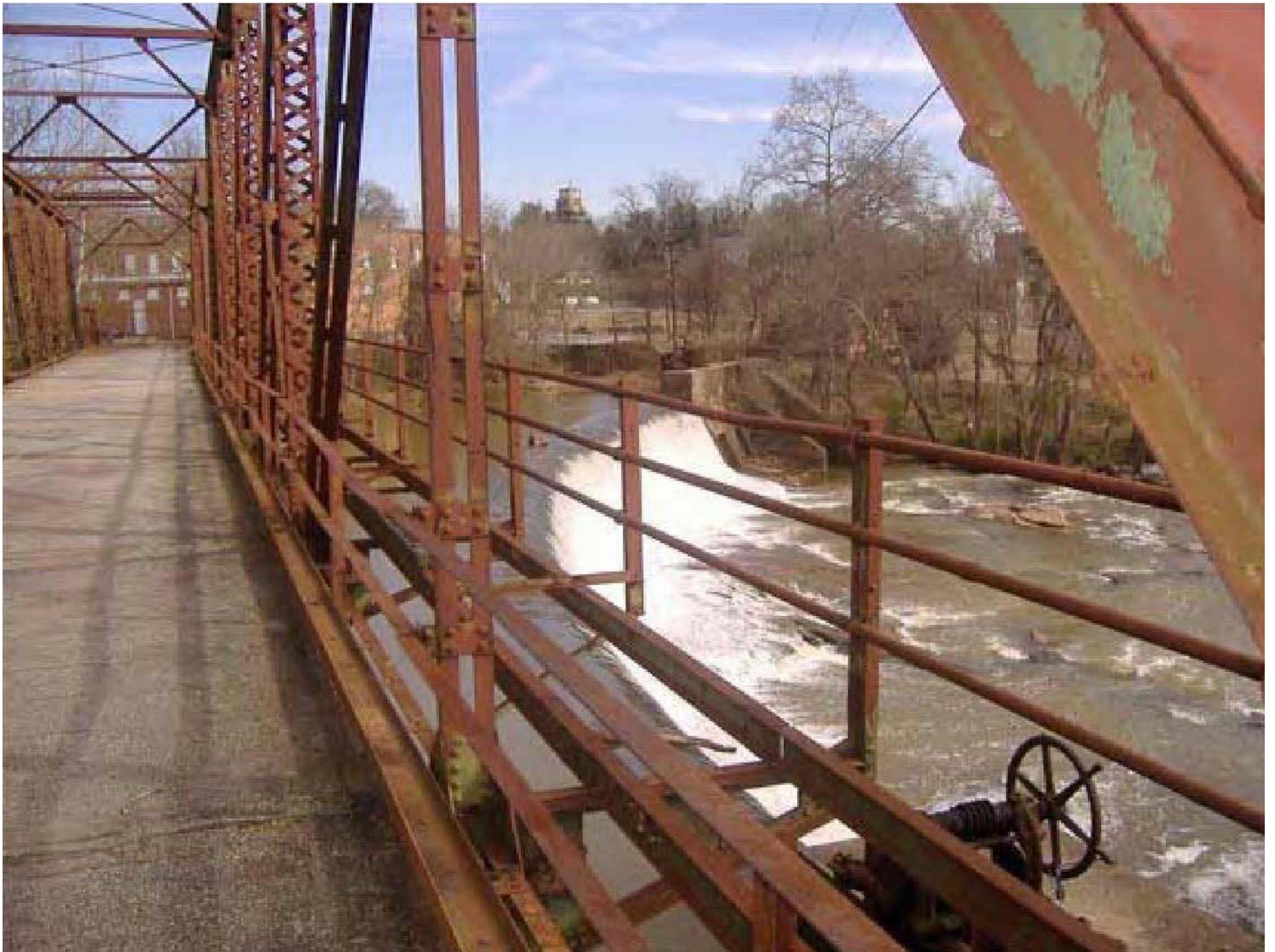
“Downtown” Glendale, Post Office, Gym



View from SPACE property across the creek



D.E. Converse house



View of dam from old iron bridge



View of 1975 bridge from old iron bridge



Architect's proposed reservoir restoration



Glendale

*S.C. Design Summit
April 24-25, 2007
A Project by
AIA Spartanburg &
The S.C. Design Arts Partnership*

Image on safe in mill office